



NEW OFFICE & SERVICE CENTER ADDRESS

12211 REGENCY VILLAGE DRIVE SUITE 12

ORLANDO, FL 32821

PHONE # 407-465-2260 / 800-901-8688 / FAX 407-465-2261

******EMERGENCY AFTER OFFICE HOURS 407-908-1672******

1. FROM ORLANDO INTERNATIONAL AIRPORT:

Take Airport South exits to Kissimmee, take Highway 417 Toll Road South (The Greenway) to Kissimmee. You will continue on Highway 417 traveling towards the Walt Disney World Area. You will pass Orange Blossom Trail (State Road 441) and John Young Parkway, continue to Exit 6 – SR535. Exit Highway 417 at Exit # 6; continue to travel straight until the traffic light at International Drive. Make a right hand turn on International Drive. Continue to travel North on International Drive. Make a left hand turn on Vineland Avenue. Continue to Village Green Drive/Regency Village Drive and turn right. Our offices and service center are located at the Regency Village Plaza. (Adjacent to McDonald's and Outback Steakhouse)

2. FROM SANFORD INTERNATIONAL AIRPORT:

Follow Airport exit to Lake Mary Road. Make left turn onto Highway 417 Toll Road. As you are traveling on Highway 417 the Exit Numbers will be in a descending order. After passing Exit # 17, follow the above instructions (from Orlando International Airport) to our office and service center.

3. FROM MIAMI VIA FLORIDA TURNPIKE NORTHBOUND:

Take the Florida Turnpike North towards Orlando. Continue to travel North on Turnpike until Exit 249. Exit the Turnpike at Exit 249 (Osceola Parkway); take Osceola Parkway West towards Kissimmee. As you travel west on Osceola Parkway you will pass Walmart Supercenter, Orange Blossom Trail, The Loop and a toll booth (Please be prepared). Take the ramp to Highway 192 Disney Resort Area Via SR535. The ramp will take you to the intersection of Poinciana Blvd and SR535. Make a right hand turn on SR535. Continue for approximately 3 miles to Vineland Avenue. Make a right hand turn on Vineland Avenue. Continue to Village Green Drive/Regency Village Drive and turn left. Our offices and service center are located at the Regency Village Plaza. (Adjacent to McDonald's and Outback Steakhouse).

4. FROM FLORIDA TURNPIKE SOUTHBOUND:

Take the Florida Turnpike South towards Orlando. Continue to travel south on Turnpike until Exit 254 (Beeline Expressway). Take the Beeline Expressway Westbound towards I-4. Take I-4 West towards Tampa & Disney Area. Continue on I-4 West until Exit 68 (Kissimmee). Take Exit 68, at traffic light make left hand turn at SR 535 South (Vineland Road). Continue to Vineland Avenue and turn left. Continue on Vineland Avenue to Village Green Drive/Regency Village Drive and turn left. Our offices and service center are located at the Regency Village Plaza. (Adjacent to McDonald's and Outback Steakhouse).

5. FROM TAMPA INTERNATIONAL AIRPORT:

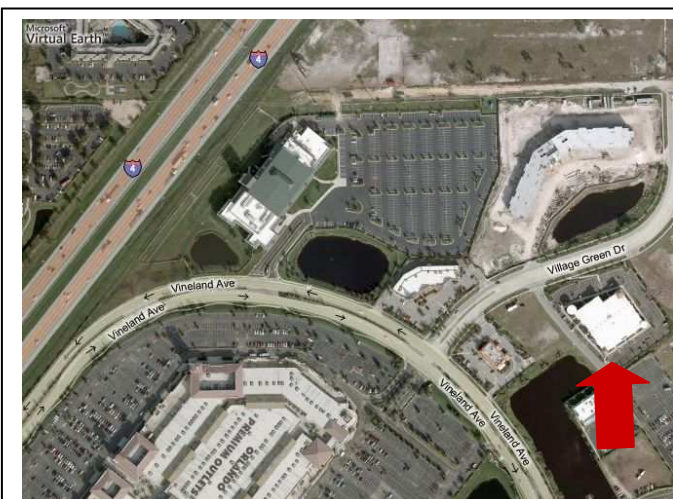
Follow Airport exit to W. Tampa Bay Blvd eastbound. Continue to Highway 92. Make Right Turn onto Highway 92 South. Take Ramp onto I-275 towards Orlando. Continue on I-275 until I-4; take ramp onto I-4 Eastbound towards Orlando. Stay traveling eastbound on I-4 until EXIT 68. Take Ramp on Exit 68. Continue straight through the traffic light onto Vineland Avenue. Continue on Vineland Avenue to Village Green Drive/Regency Village Drive and turn left. Our offices and service center are located at the Regency Village Plaza. (Adjacent to McDonald's and Outback Steakhouse).

6. FROM I-95 SOUTHBOUND:

Take I-95 Southbound towards Florida. You will pass the cities of Jacksonville, St. Augustine and Daytona. Exit I-95 at the Exit towards Orlando, which will be I-4 Westbound. As you travel West on I-4 the Exit Numbers will be in a descending order. Travel until Exit 68 (Kissimmee); take Exit 68 then at Traffic light make left hand turn onto SR 535 South. Continue to the traffic light of Vineland Avenue and turn left. Continue on Vineland Avenue to Village Green Drive/Regency Village Drive and turn left. Our offices and service center are located at the Regency Village Plaza. (Adjacent to McDonald's and Outback Steakhouse).

OFFICE HOURS: MONDAY-FRIDAY 8:30 AM TO 7:00 PM / SATURDAYS 9:00 AM TO 5:00 PM

*****EMERGENCY AFTER HOURS PHONE # 407-908-1672*****



**IF YOU ARRIVE AFTER 7:00 PM OR ON SUNDAY:
YOU WILL FIND A PACKET IN OUR LOCK BOX,
LOCATED AT THE OFFICE ENTRANCE.**

To open this box, Press II and IV at the same time, release then press III and turn the silver latch to right and open the door at the same time while you are holding the silver latch.

Guest should report themselves to our office on the next business day to make their registration effective.

Emergency Number: 407-908-1672